



K.L.E. SOCIETY'S

# LINGARAJ COLLEGE, BELAGAVI

(Autonomous)

Affiliated to Rani Channamma University, Belagavi

Re-Accredited at the 'A' level by NAAC

## Feedback on Curriculum 2022-23

### Action Taken Report

Sl No	Feed Back	Action Taken
01	Dr. Sreenivas M BOS Member of Bangauru University Bangaluru suggested to include internet and gaming addiction in clinical psychology	Internet and gaming addictions were introduced in BA-V Semester clinical Psychology Syllabus
02	Dr. Kshipra Vora from St Xavier's College Goa suggested to add ANOVA in BA-VI Semester Research methodology and Statistics syllabus	ANOVA was introduced in BA-VI semester Research methodology and Statistics syllabus
03	Dr. Vijayalaxmi Amminabhavi BOS Member from Karnatak University Dharwad suggested to include Equity Theory in Organizational Behavior	Equity Theory was introduced in BA - VI semester Organizational Behavior syllabus
04	Dr. Vanishri suggested to introduce dissertation in the place of practicals in BA-VI semester	Dissertation was introduced in the place of Practical in the BA-VI Semester

  
Co-ordinator IQAC  
LINGARAJ COLLEGE  
BELAGAVI



  
PRINCIPAL  
LINGARAJ COLLEGE  
BELAGAVI



K.L.E. SOCIETY'S

## LINGARAJ COLLEGE, BELAGAVI

(Autonomous)

Affiliated to Rani Channamma University, Belagavi

Re-Accredited at the 'A' level by NAAC

05	Dr. Kiran Bhairannavar AC Nominee suggested to include the components of Demography in the BA-V Semester Theory Course	components of Demography like Birth rate, Death rate, sex composition and age compositions were introduced in BA-V Semester theory course
06	Dr. L T Nayak AC Nominee suggested to delete the Electro mechanical and optical sensors in BA-V Semester theory course	Electro mechanical and optical sensors in BA-V Semester theory course was deleted
07	Dr. Majunath N K VC Nominee suggested to include causes and consequences of under Optimum, under and over population in BA-V Semester theory course	Optimum, under and over population in BA-V Semester theory course was introduced
08	Dr. Shoukat Azim AC Nominee Karnataka University Dharwad Suggested to include SC, ST and OBC groups in BA-IV Semester Syllabus	SC, ST and OBC groups was included in BA-IV Semester Syllabus

  
Co-ordinator IQAC  
LINGARAJ COLLEGE  
BELAGAVI



  
PRINCIPAL  
LINGARAJ COLLEGE  
BELAGAVI



K.L.E. SOCIETY'S

## LINGARAJ COLLEGE, BELAGAVI

(Autonomous)

Affiliated to Rani Channamma University, Belagavi

Re-Accredited at the 'A' level by NAAC

09	Dr. I C Mulagund AC Nominee Karnatak University, Dharwad suggested to include status of landless agricultural labourers in BA-IV Semester Syllabus	Status of landless agricultural labourers was introduced in BA-IV Semester Syllabus
10	Dr. Y S Balavanthagol VC Nominee Rani Channamma University, Belagavi Suggested to incorporate the conditions of women in Afghanistan, and current affairs of National and international Politics	Conditions of women in Afghanistan, and current affairs of National and international Politics was incorporated in the BA-III Semester Curriculum
11	Dr. S B Vastrad Ac Nominee Gokhale Centenary College, Ankola suggested to include Challenges to Indian Political System - implementation of Development strategies in India for BA IV semester (DSC 71	The Challenges to Indian Political System - implementation of Development strategies in India for BA IV semester curriculum

  
Co-ordinator IQAC  
LINGARAJ COLLEGE  
BELAGAVI



  
PRINCIPAL  
LINGARAJ COLLEGE  
BELAGAVI



K.L.E. SOCIETY'S

# LINGARAJ COLLEGE, BELAGAVI

(Autonomous)

Affiliated to Rani Channamma University, Belagavi

Re-Accredited at the 'A' level by NAAC

12	Dr. S.N. Hullannavar, AC Nominee Karnataka Arts college Dharwad, suggested to include Political Parties, Pressure groups and lobby groups in BA IV semester Syllabus	The Political Parties, Pressure groups and lobby groups were included in BA IV semester Syllabus
13	Dr. Rajeev Hiremath Alumni suggested to incorporate Devanagari script in BA-V Semester Curriculum	Devanagari script was incorporated in BA- V Semester Curriculum
14	Dr. Pooja Halyal, VC nominee Assistant Professor in English, Rani Channamma University, Belagavi suggested to include Kabir's poems and Choma's Drum in BA-III Semester DSC - 6 Curriculum	Kabir's poems and Choma's Drum was included in BA-III Semester DSC - 6 Curriculum
15	Smt Shanta Acharya, Expert from allied area, suggested to introduce the play Abhijnana Shakuntala by Kalidasa in BA-III Semester <b>DSCC A6</b>	The play Abhijnana Shakuntala by Kalidasa was included in BA-III semester DSC - 6 Curriculum

  
Co-ordinator IQAC  
LINGARAJ COLLEGE  
BELAGAVI



  
PRINCIPAL  
LINGARAJ COLLEGE  
BELAGAVI



K.L.E. SOCIETY'S

## LINGARAJ COLLEGE, BELAGAVI

(Autonomous)

Affiliated to Rani Channamma University, Belagavi

Re-Accredited at the 'A' level by NAAC

16	Prof. Nagaratna Parande, VC Nominee Rani Channamma University, Belagavi suggested to incorporate the fiction <b>Nineteen Eighty Four</b> by George Orwell in BA-IV semester <b>DSCC A7</b> curriculum	The fiction <b>Nineteen Eighty Four</b> by George Orwell was incorporated in BA-IV semester <b>DSCC A7</b> curriculum
17	Dr. S.G. Vaidya suggested to include <b>Aniketana</b> by Kuvempu in <b>BA IV Semester AECC</b> curriculum	<b>Aniketana</b> by Kuvempu was included in <b>BA IV Semester AECC</b> curriculum
18	Prof. Subhramanya Bhat suggested to add K. Ayyappa Paniker's theory on translation, Tagore's and Aurobindo's views on translation and <b>Athiti(The Runway/ The Guest)</b> a short story by Tagore in the Translation Studies curriculum	K. Ayyappa Paniker's theory on translation, Tagore's and Aurobindo's views on translation and <b>Athiti(The Runway/ The Guest)</b> a short story by Tagore in the Translation Studies curriculum was incorporated
19	Dr. Girijashankar Mane Alumni suggested a short story <b>Shroud</b> by Premchand and a poem by Sant Tukaram <b>Deh Devache Mandir.</b> in the Translation Studies curriculum.	The short story <b>Shroud</b> by Premchand and a poem by Sant Tukaram <b>Deh Devache Mandir.</b> was included in the Translation Studies curriculum

  
Co-ordinator IQAC  
LINGARAJ COLLEGE  
BELAGAVI



  
PRINCIPAL  
LINGARAJ COLLEGE  
BELAGAVI



K.L.E. SOCIETY'S

## LINGARAJ COLLEGE, BELAGAVI

(Autonomous)

Affiliated to Rani Channamma University, Belagavi

Re-Accredited at the 'A' level by NAAC

20	Alumni Feedback to introduce specializations for B.Com students	Four Specializations under CBCS were introduced i.e.  1) Banking and Insurance 2) Accounting and Finance 3) Finance 4) Business Analytics
21	Employers feedback to introduce more digital marketing tools	The components of digital marketing like Marketing in the digital world, sales promotion and digital marketing, Building a robust digital marketing strategy are introduced
22	Alumni feedback industry oriented Skill Enhancement Courses can be made practical	Under each specialization Skill Enhancement courses are made practical as per the industry requirements.
23	Industry Representative suggested that Quantitative Techniques for Business Decision course can be made practical	Quantitative Techniques for Business Decision course for III and IV Semester under NEP was introduced as practical course

  
Co-ordinator IQAC  
LINGARAJ COLLEGE  
BELAGAVI



  
PRINCIPAL  
LINGARAJ COLLEGE  
BELAGAVI

K.L.E. Society's  
**LINGARAJ COLLEGE, BELAGAVI**  
(Autonomous)

**Teachers/BOS Members/Academic Peer Team Feedback on Curriculum**  
(2022-23)

**Methodology :**

\* Primary Data - Questionnaire Method

\* Statistical Tools used : Weightage Method

SL. No.	Particulars	Response					Weighted Response				Sum of Weightage ( $\Sigma$ RW)	Score ( $\Sigma$ RW/N)
		SA	A	DA	SDA	Total (N)	4	3	2	1		
1	Curriculum helps to develop thinking ability	69	18	0	0	87	345	72	0	0	417	4.79
2	Curriculum helps in developing communication skills	58	28	1	0	87	290	112	3	0	405	4.66
3	Curriculum enhances Analytical skills	67	2	0	0	69	335	8	0	0	343	3.94
4	Curriculum focuses on multi-skill development	58	27	2	0	87	290	108	6	0	404	4.64
5	Curriculum emphasizes on global competencies	56	31	0	0	87	280	124	0	0	404	4.64
6	Curriculum builds employability and Entrepreneurial attitude amongst the students	57	30	0	0	87	285	120	0	0	405	4.66
7	Curriculum boosts belongingness with Community	65	21	1	0	87	325	84	3	0	412	4.74
8	Curriculum has the potential in developing the habit of self-learning among the students	71	15	1	0	87	355	60	3	0	418	4.80

**Survey conducted by IQAC**

Note: SA= Strongly Agree

A= Agree

DA=Disagree

SDA= Strogly Disagree

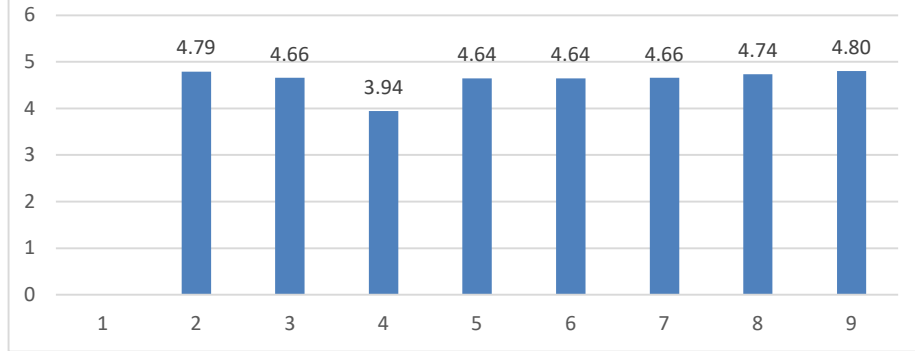
  
Co-ordinator IQAC  
LINGARAJ COLLEGE  
BELAGAVI



  
PRINCIPAL  
LINGARAJ COLLEGE  
BELAGAVI



Teachers/BOS Members/Academic Peer Feedback  
on Curriculum  
(2022-23)



  
Co-ordinator IQAC  
LINGARAJ COLLEGE  
BELAGAVI



  
PRINCIPAL  
LINGARAJ COLLEGE  
BELAGAVI



K.L.E. Society's  
**LINGARAJ COLLEGE, BELAGAVI**  
(Autonomous)

**Students Feedback on Curriculum**  
(2022-23)

**Methodology :**

\* Primary Data - Questionnaire Method

\* Statistical Tools used : Weightage Method

SL. No.	Particulars	Response					Weighed Response				Sum of Weightage ( $\Sigma RW$ )	Score ( $\Sigma RW / N$ )
		SA	A	DA	SDA	Total (N)	4	3	2	1		
1	The curriculum is up-to-date, need based & application oriented.	124	75	1	0	200	620	300	3	0	923	4.62
2	Whether syllabus is focusing on employability	100	96	4	0	200	500	384	12	0	896	4.48
3	Whether syllabus is focusing on entrepreneurship	102	89	9	0	200	510	356	27	0	893	4.47
4	Whether syllabus is focusing on skill development	123	73	4	0	200	615	292	12	0	919	4.60
5	Syllabus equipped me with necessary technical skills to face the industry	98	90	11	1	200	490	360	33	2	885	4.43
6	Curriculum encourages holistic development of the students	106	89	4	1	200	530	356	12	2	900	4.50
7	Learning objectives are clear and appropriate to the needs of the students	106	93	1	0	200	530	372	3	0	905	4.53
8	Curriculum covers issues like Human Values, Gender Equity, Professional Ethics, Environment and Sustainability etc.	109	88	3	0	200	545	352	9	0	906	4.53
9	Interest is generated by teacher while teaching	130	69	1	0	200	650	276	3	0	929	4.65
10	Curriculum helps to develop skills related to face competitive exams	110	79	9	2	200	550	316	27	4	897	4.49

**Survey conducted by IQAC**

SA= Strongly Agree

A= Agree

DA=Disagree

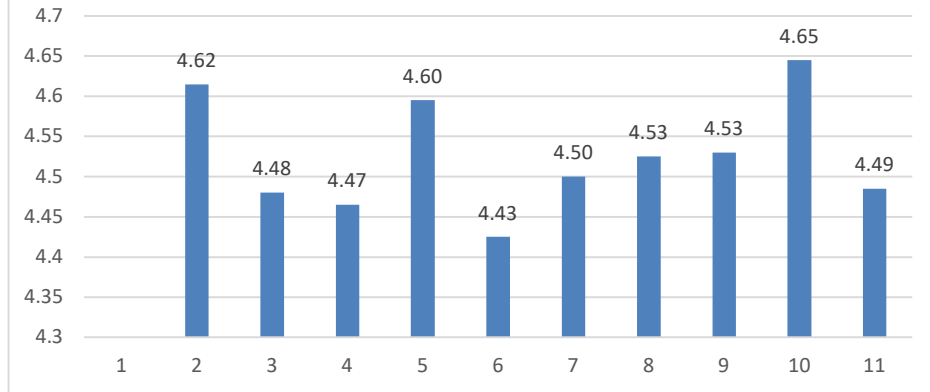
SDA= Strogly Disagree

  
Co-ordinator IQAC  
LINGARAJ COLLEGE  
BELAGAVI



  
PRINCIPAL  
LINGARAJ COLLEGE  
BELAGAVI

### Students Feedback on Curriculum (2022-23)



*[Signature]*  
Co-ordinator IQAC  
LINGARAJ COLLEGE  
BELAGAVI



*[Signature]*  
PRINCIPAL  
LINGARAJ COLLEGE  
BELAGAVI

K.L.E. Society's  
**LINGARAJ COLLEGE, BELAGAVI**  
(Autonomous)

**Employers' Feedback on Curriculum**  
(2022-23)

**Methodology :**

\* Primary Data - Questionnaire Method

\* Statistical Tools used : Weightage Method

SL. No.	Particulars	Response					Weighted Response				Sum of Weightage ( $\Sigma$ RW)	Score ( $\Sigma$ RW/N)
		SA	A	DA	SDA	Total (N)	4	3	2	1		
1	Curriculum helps to develop thinking ability	18	3	0	0	21	90	12	0	0	102	4.86
2	Curriculum helps in developing communication skills	9	12	0	0	21	45	48	0	0	93	4.43
3	Curriculum enhances Analytical skills	10	11	0	0	21	50	44	0	0	94	4.48
4	Curriculum focuses on multi-skill development	10	10	1	0	21	50	40	3	0	93	4.43
5	Curriculum emphasizes on global competencies	9	11	1	0	21	45	44	3	0	92	4.38
6	Curriculum builds employability and Entrepreneurial attitude amongst the students.	12	8	1	0	21	60	32	3	0	95	4.52
7	Curriculum boosts belongingness with Community	12	8	1	0	21	60	32	3	0	95	4.52
8	Curriculum has the potential in developing the habit of self-learning among the students	13	8	0	0	21	65	32	0	0	97	4.62

**Survey conducted by IQAC**

Note: SA= Strongly Agree

A= Agree

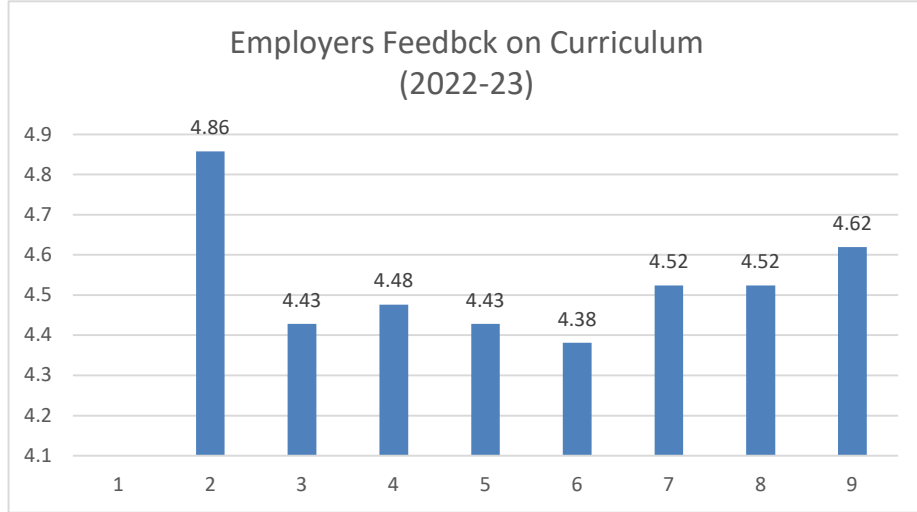
DA=Disagree

SDA= Strongly Disagree

  
Co-ordinator IQAC  
LINGARAJ COLLEGE  
BELAGAVI



  
PRINCIPAL  
LINGARAJ COLLEGE  
BELAGAVI



*College*  
Co-ordinator IQAC  
LINGARAJ COLLEGE  
BELAGAVI



*[Signature]*  
PRINCIPAL  
LINGARAJ COLLEGE  
BELAGAVI

K.L.E. Society's  
**LINGARAJ COLLEGE, BELAGAVI**  
(Autonomous)

**Alumni Feedback on Curriculum**  
(2022-23)

**Methodology :**

\* Primary Data - Questionnaire Method

\* Statistical Tools used : Weightage Method

SL. No.	Particulars	Response					Weighated Response				Sum of Weightage (ΣRW)	Score (ΣRW /N)
		SA	A	DA	SDA	Total (N)	4	3	2	1		
1	The curriculum is up-to-date, need based & application oriented.	135	63	2	0	200	675	252	6	0	933	4.67
2	Whether syllabus is focusing on employability	126	72	2	0	200	630	288	6	0	924	4.62
3	Whether syllabus is focusing on entrepreneurship	126	72	2	0	200	630	288	6	0	924	4.62
4	Whether syllabus is focusing on skill development	142	56	2	0	200	710	224	6	0	940	4.70
5	Syllabus equipped me with necessary technical skills to face the industry	119	77	4	0	200	595	308	12	0	915	4.58
6	Curriculum encourages holistic development of the students	129	66	5	0	200	645	264	15	0	924	4.62
7	Learning objectives are clear and appropriate to the needs of the students	119	76	5	0	200	595	304	15	0	914	4.57
8	Curriculum covers issues like Human Values, Gender Equity, Professional Ethics, Environment and Sustainability etc.	124	72	4	0	200	620	288	12	0	920	4.60
9	Interest is generated by teacher while teaching	122	75	3	0	200	610	300	9	0	919	4.60
10	Curriculum helps to develop skills related to face competitive exams	116	81	2	1	200	580	324	6	2	912	4.56

**Survey conducted by IQAC**

Note: SA= Strongly Agree

A= Agree

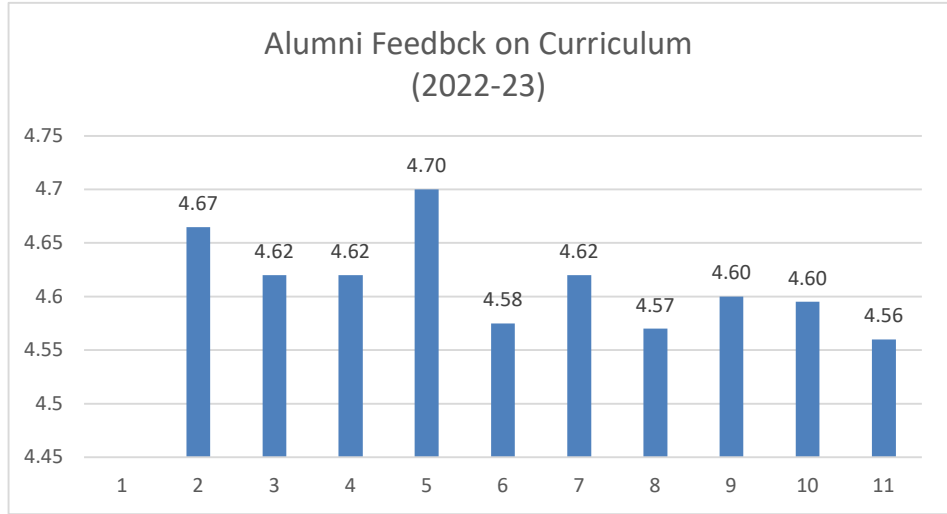
DA=Disagree

SDA= Strogly Disagree

  
Co-ordinator IQAC  
LINGARAJ COLLEGE  
BELAGAVI



  
PRINCIPAL  
LINGARAJ COLLEGE  
BELAGAVI



  
Co-ordinator IQAC  
LINGARAJ COLLEGE  
BELAGAVI



  
PRINCIPAL  
LINGARAJ COLLEGE  
BELAGAVI